

by Kara M. Lyon
kara@karabouts.com

Description



My friend Martha, a designer for Stiletto Leather Wear in Manhattan's East Village, asked me to make her a pair of soft fuzzy wrist warmers with skulls on them. To me the request seemed like a contradiction (who's ever heard of a soft fuzzy skull?) but I went to work on the pattern anyway and I ended up loving the result!

These wrist warmers are quick and simple to make, look great, and feel wonderful against your skin. Since Martha is a dear friend, I used 100% cashmere for her pair, but any soft DK weight yarn will do.

SIZE
S [M, L]

FINISHED MEASUREMENTS
6[6.5, 6.75] inches

MATERIALS
Soft DK weight yarn such as Jaeger Extra Fine Merino DK (100% Extra Fine Merino, 136 yds/50g)

1 set US #4/3.5 mm straight needles

Tapestry needle

GAUGE
24 sts/32 rows = 4" in stockinette stitch

PATTERN NOTES
For this pattern you will be working the chart upside down (see chart attached) and carrying your yarn at the back of your work.

Skull Wrist Warmers
- Original Knitting Pattern and Chart

by Kara M. Lyon
kara@karabouts.com

Pattern

With MC, CO 41[45, 47] sts.

Work three rows k1,p1 rib.

P next row.

Begin skull pattern: (RS) k 12[14, 15] st, k17 st of chart, k to end of row. Cont working chart in stokinette st. until finished.

P next row.

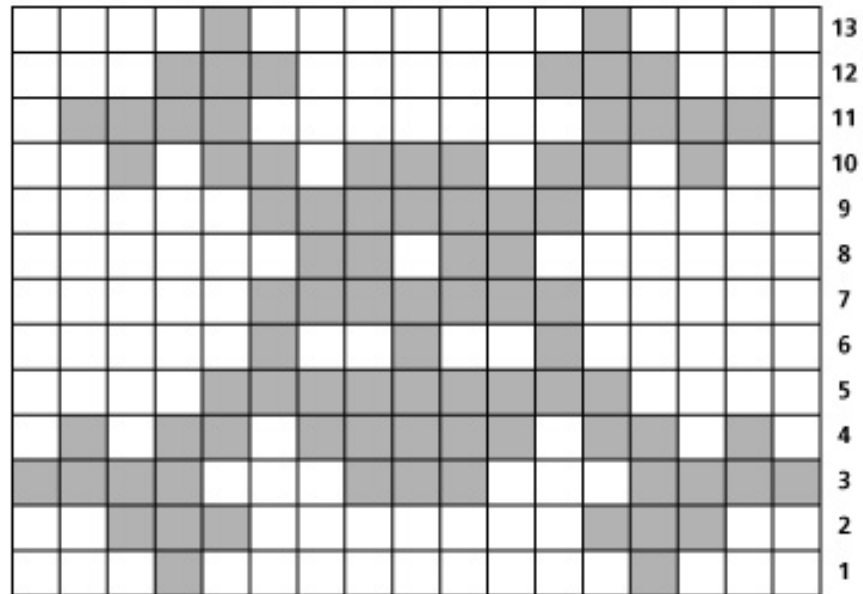
Work three rows k1, p1 rib.

Bind off in pattern.

FINISHING

Block lightly. Sew side seams.

□ MC ■ CC



Note: pattern is worked upside down

by Kara M. Lyon
kara@karabouts.com

**Additional
Photos**



If you have any questions
about this pattern feel free
to email me at
kara@karabouts.com

HAPPY KNITTING!!